

## 12 Ultra Concentrated Pure Pigments

**PIGMENTS**, innovative hair colors designed to intensify and enrich any Alfaparf Milano services (Treatment, Color, Shape and Styling) with extraordinary tones. Perfectly adaptable to any cosmetic service, these ultra-concentrated pigments can be mixed with a wide variety of products to revive both natural and color-treated hair, keeping color bright and vibrant. 3 Patents pending.

The 12 Pure Pigments can be mixed with each other. Moreover, the intensity of the color result can be adjusted with a higher or lower pigment concentration in the mixture. Suitable for natural, color-treated or bleached hair.

<b>Ash .1</b> To emphasize cool/ash highlights in dark hair (from Medium Brown to Black), giving depth and neutralizing unwanted orange tones.	<b>Gold .3</b> To revive warm blonde tones or add new golden tones.	<b>Copper .4</b> To enhance copper tones or add new delicate tones.	<b>Red .6</b> To revive the brightness of reds or add new delicate tones.	<b>Ash Gold .13</b> To enhance blonde and light brown tones or add new beige tones.	<b>Golden Violet .32</b> To emphasize highlights in brown and light brown hair, and for enriching natural hair with gentle highlights.
---	--	--	--	--	---



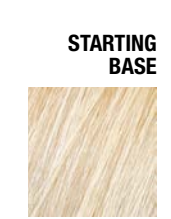
**SALON SIZE:**  
90 ml - 3.04 Fl. Oz. bottle

<b>Golden Mahogany .35</b> To add depth to dark brown tones or add new brown tones.	<b>Violet Ash .21</b> To amplify the cool blonde tones and revive white/grey hair neutralizing undesired yellow tones.	<b>Ultra Violet .22</b> To preserve and ensure the quality of violets and to enrich dark and very dark shades, both natural and cosmetic, with violet tones. Has a powerful anti-yellow effect.	<b>Rose Copper</b> To emphasize rose copper highlights and maintain them over time. Apply to bleached hair to create unparalleled shades.	<b>Bronze</b> To maintain shades of bronze and give depth to natural and color treated browns, enriching them with amber highlights.	<b>Grey Black</b> To enhance and ensure the quality of grey shades. Ideal for providing and maintaining depth to dark and very dark colors, both natural and cosmetic.
--	---	--	--	---	---

## Result of PIGMENTS mixed into the Lisse Design service

	BEFORE LISSE DESIGN SERVICE	SMOOTHING FLUID 10 APPLICATIONS OF FLAT IRON AT 200 °C	SMOOTHING FLUID + PIGMENTS (10:1) 10 APPLICATIONS OF FLAT IRON AT 200 °C
HAIR COLORED WITH 6.66			 Pigments .6
HAIR COLORED WITH 6.35			 Pigments .35
BLEACHED HAIR			 Pigments .21

## Result of PIGMENTS mixed into Masks



**PIGMENTS WITHOUT MIXING**

Ash .1	Gold .3	Copper .4	Red .6	Ash Gold .13	Golden Violet .32	Golden Mahogany .35	Violet Ash .21	Ultra Violet .22	Rose Copper Metallic	Bronze Metallic	Grey Black Metallic
--------	---------	-----------	--------	--------------	-------------------	---------------------	----------------	------------------	----------------------	-----------------	---------------------

**DILUTION RATIO PIGMENTS 10:5 - 10g - 0.35 Oz. MASK + 5g - 0.18 Oz. PIGMENTS**

Ash .1	Gold .3	Copper .4	Red .6	Ash Gold .13	Golden Violet .32	Golden Mahogany .35	Violet Ash .21	Ultra Violet .22	Rose Copper Metallic	Bronze Metallic	Grey Black Metallic
--------	---------	-----------	--------	--------------	-------------------	---------------------	----------------	------------------	----------------------	-----------------	---------------------

**DILUTION RATIO PIGMENTS 10:1 - 10g - 0.35 Oz. MASK + 1g - 0.04 Oz. PIGMENTS**

Ash .1	Gold .3	Copper .4	Red .6	Ash Gold .13	Golden Violet .32	Golden Mahogany .35	Violet Ash .21	Ultra Violet .22	Rose Copper Metallic	Bronze Metallic	Grey Black Metallic
--------	---------	-----------	--------	--------------	-------------------	---------------------	----------------	------------------	----------------------	-----------------	---------------------

**DILUTION RATIO PIGMENTS 25:1 (home treatment) - 25g - 0.88 Oz. MASK + 1g - 0.04 Oz. PIGMENTS**

Ash .1	Gold .3	Copper .4	Red .6	Ash Gold .13	Golden Violet .32	Golden Mahogany .35	Violet Ash .21	Ultra Violet .22	Rose Copper Metallic	Bronze Metallic	Grey Black Metallic
--------	---------	-----------	--------	--------------	-------------------	---------------------	----------------	------------------	----------------------	-----------------	---------------------

	Service	Mix with	Dilution ratio	Example	Processing time	Instructions	Duration (shampoo)
<b>COLOR</b>	Create new shades	Evolution of the Color, Color Wear, Precious Nature Hair Color	Levels 8/9/10 - 60:1 Levels 6/7 - 30:1 Levels 4/5 - 20:1 Levels 1/2/3 - 10:1	Levels 8/9/10 - 60 g (2 Oz.) Colour + 1 g (0.03 Oz.) Pigments. Levels 6/7 - 60 g (2 Oz.) Colour + 2 g (0.06 Oz.) Pigments. Levels 4/5 - 60 g (2 Oz.) Colour + 3 g (0.1 Oz.) Pigments. Levels 1/2/3 - 60 g (2 Oz.) Colour + 6 g (0.2 Oz.) Pigments.	As specified in color service	Add Pigments after mixing the color with the activator. Apply color mixture as usual.	/
	Repigment	Water	2:1, 3:1, 4:1, 5:1, 6:1, 7:1, 8:1, 9:1 (depending on desired color)	Level 1 - 2 g (0.06 Oz.) water + 1g (0.03 Oz.) Pigments. Level 2 - 3 g (0.1 Oz.) water + 1g (0.03 Oz.) Pigments. Level 3 - 4 g (0.13 Oz.) water + 1g (0.03 Oz.) Pigments; etc.	5 minutes	Mix Pigments in a bowl with water and apply with a brush to dry hair. At the end of the processing time rinse, dry and proceed with color.	/
	FIRST DATE WITH COLOR First hair coloring on natural hair	Mask or Conditioner	Levels 8/9/10 - 20:1 Levels 6/7 - 10:1 Levels 4/5 - 10:2 Levels 1/2/3 - 10:4	Levels 8/9/10 - 20 g (0.67 Oz.) Mask + 1 g (0.03 Oz.) Pigments. Levels 6/7 - 20 g (0.67 Oz.) Mask + 2 g (0.06 Oz.) Pigments. Levels 4/5 - 20 g (0.67 Oz.) Mask + 4 g (0.13 Oz.) Pigments. Levels 1/2/3 - 20 g (0.67 Oz.) Mask + 8 g (0.27 Oz.) Pigments.	20-30 minutes	Add Pigments + mask or conditioner mixture to washed and towel-dried hair. Rinse well after the processing time is over.	Add Pigments to the treatment product. Distribute evenly. Rinse well.
	COLOR AS NEW Refresh or personalize natural or cosmetic color						
	SHINE - STRUCK	Water + shampoo in Mousse Maker	Levels 8/9/10 - 20:1:1 Levels 6/7 - 10:1:1 Levels 4/5 - 10:2:2 Levels 1/2/3 - 10:4:4	Levels 8/9/10 - 50 g (1.76 Oz.) water + 2.5 g (0.09 Oz.) Pigments + 2.5 g (0.09 Oz.) shampoo. Levels 6/7 - 50 g (1.76 Oz.) water + 5 g (0.18 Oz.) Pigments + 5 g (0.18 Oz.) shampoo. Levels 4/5 - 50 g (1.76 Oz.) water + 10 g (0.35 Oz.) Pigments + 10 g (0.35 Oz.) shampoo. Levels 1/2/3 - 50 g (1.76 Oz.) water + 20 g (0.70 Oz.) Pigments + 20 g (0.70 Oz.) shampoo.	2/5 minutes	Mix water into the Mousse Maker with shampoo and Pigments. Apply the mousse evenly throughout washed and towel-dried hair. Put on a plastic cap and leave under heat source for 5 minutes. Rinse well and proceed with styling.	From 5 to 8 shampoos
<b>SHAPE</b>	2-IN-1: STRAIGHT & COLOR Enhance/correct color during a straightening service	Lisse Design Smoothing Fluid	For cool blondes mix 8:1 with Pigments .21 (= Silver Smoothing Fluid) For warm blondes mix 20:1 with Pigments .21 For reds, browns and copper mix 10:1 with Pigments .6, .32, .35 and .4	80 g (2.67 Oz.) Smoothing Fluid + 10 g (0.33 Oz.) Pigments. 80 g (2.67 Oz.) Smoothing Fluid + 4 g (0.13 Oz.) Pigments. 80 g (2.67 Oz.) Smoothing Fluid + 8 g (0.27 Oz.) Pigments.	Varies depending on method	Apply Pigments + Smoothing fluid mixture evenly throughout the hair. Proceed according to selected method.	
	2-IN-1: CURLY & COLOR Enhance/correct color during a perm.	Curl Design Move Fixer	Levels 8/9/10 - 20:1 Levels 6/7 - 10:1 Levels 4/5 - 10:2 Levels 1/2/3 - 10:4	Levels 8/9/10 - 100 ml (3.33 Fl. Oz.) Neutraliser + 5 g (0.17 Oz.) Pigments. Levels 6/7 - 100 ml (3.33 Fl. Oz.) Neutraliser + 10 g (0.33 Oz.) Pigments. Levels 4/5 - 100 ml (3.33 Fl. Oz.) Neutraliser + 20 g (0.67 Oz.) Pigments. Levels 1/2/3 - 100 ml (3.33 Fl. Oz.) Neutraliser + 40 g (1.33 Oz.) Pigments.	As specified for neutralization	Apply Pigments + Neutralizer mixture evenly throughout the hair. Rinse well after the processing time is over.	
	C + C = CARE & COLOR Revive a color during a specific treatment	Mask, vials, or a combination of both		Levels 8/9/10 - 20 g (0.67 Oz.) Mask/Vial + 1 g (0.03 Oz.) Pigments. Levels 6/7 - 20 g (0.67 Oz.) Mask/Vial + 2 g (0.06 Oz.) Pigments. Levels 4/5 - 20 g (0.67 Oz.) Mask/Vial + 4 g (0.13 Oz.) Pigments. Levels 1/2/3 - 20 g (0.67 Oz.) Mask/Vial + 8 g (0.27 Oz.) Pigments.	3-5 minutes	Add Pigments to treatment. Distribute evenly. Rinse well after the processing time is over.	
<b>CARE</b>	C + C = CARE & COLOR Care for the well-being of the hair and maintain the color at home	Pigments Shampoo + Mask	25:1	1 x 8 g (0.27 Oz.) tube Pigments per 200 ml (6.76 Fl. Oz.) Shampoo or Mask.	2-3 minutes	Apply shampoo and/or mask mixed with Pigments to wet hair. Rinse well after the processing time is over.	From 2 to 3 shampoos
	STYLE WITH COLOR	Mousse, gel, liquids	1/5 pump per application	2 pumps mousse + 0.25 g (0.01 Oz.) Pigments.	/	Using gloves, apply to damp hair. Apply onto wet bleached hair, do not towel-dry them. Distribute evenly. Dry.	Up to 5 shampoos
<b>STYLING</b>	CHROMATIC BLOW OUT	Water	10:1	10 ml water (0.33 Fl. Oz.) + 1-2 pumps Pigments.	/	Mix Pigments into the bottle with water and shake it. Spray the mixture onto washed and towel-dried hair. Do not rinse. Proceed to drying or styling.	From 1 to 2 shampoos





# PIGMENTS Colors everything

ALFAPARFMILANO.COM



Made in Italy - BEAUTY & BUSINESS SPA  
Via C. Cantù, 1 - 20123 Milano (Italy)  
Created and Formulated in Italy  
**ALFAPARF GROUP**



SHAMPOO SIZE: 200 ml - 6.76 Fl. Oz. bottle  
MASK SIZE: 200 ml - 6.91 Oz. Net Wt. Jar



## 6 Treatment Bases

3 specific Shampoos and Masks to take care not only of the color, but also of the fiber well-being. Formulated to maximize the action of Pure Pigments and make the mixture incredibly performing.

**Hydrating**  
FOR SLIGHTLY DRY HAIR

A mixture of active ingredients creates a special film that wraps around the hair, thus retaining water already present and adding shine.

**Nutritive**  
FOR DRY HAIR

With Vegetable Oils rich in fatty acids, and Vitamins A and E, specific for nourishing the hair leaving it soft and revitalized.

**Repairative**  
FOR DAMAGED HAIR

With Silk Peptides that distribute effectively along the lengths to repair the most damaged areas of the hair fiber.