

Keratin Therapy

LISSE DESIGN

Step by Step

ALFAPARF
MILANO
PROFESSIONAL

Lisse Design Precision Method

The luxury of the perfect smoothness you've always dreamt of.

STEP 1 Apply **Deep Cleansing Shampoo** to damp hair. Massage to create an even lather, then rinse.
Shampoo twice.



THE TECHNICIAN'S TIP
If the hair is very curly/coarse, leave the **Deep Cleansing Shampoo** on the hair for 5/10 minutes under heat. Then rinse thoroughly.



STEP 2 Now dry the hair from roots to ends using a hairdryer.
Divide the hair into 4 sections, or into 6 sections if the hair is very long.



STEP 3 Wear gloves. Pour 40ml of **Smoothing Fluid** into a suitable bowl. You may need to use more fluid, depending on the length, density or porosity of the hair.



MIXABLE WITH PIGMENTS!



STEP 4 Take 0.5cm deep subsections. Using a brush, apply the fluid through the hair, keeping it 1cm away from the root.



Distribute evenly through the lengths and ends using a fine-tooth comb. Take care to not apply too much fluid.

If the hair looks too wet, use the next section to absorb the excess product.



STEP 5 Allow the product to process for twenty minutes at room temperature.

THE TECHNICIAN'S TIP
If the hair is particularly curly and/or coarse: cover it with a cap and process under heat for 20 minutes to maximize the effect. Then remove the cap and allow the hair to cool by leaving it at room temperature for five minutes.

STEP 6 If the hair is damaged or very porous, it will need 3-4 pumps of **Detangling Cream**. Use a fine-tooth comb to distribute the product evenly through lengths and ends.



STEP 7 Do not rinse. Dry the hair thoroughly, ensuring it is 100% dry.



STEP 8 Taking 0.5cm sections, iron the hair as indicated in the table. After ironing, rinse the hair thoroughly until there is no product residue remaining.



STEP 9 Next, apply the **Rehydrating Finishing Mask** to damp hair. Leave for 5 minutes and rinse. Then you're done.
Blow dry the hair to achieve the client's desired look. If needed, you can iron the hair lightly.



MIXABLE WITH PIGMENTS!



Lisse Design Express Method

The luxury of the perfect smoothness you've always dreamt of.

STEP 1 Apply **Deep Cleansing Shampoo** to damp hair. Massage to create an even lather, then rinse.
Shampoo twice.



THE TECHNICIAN'S TIP
If the hair is very curly/coarse, leave the **Deep Cleansing Shampoo** on the hair for 5/10 minutes under heat. Then rinse thoroughly.



STEP 2 Now dry the hair from roots to ends using a hairdryer.
Divide the hair into 4 sections, or into 6 sections if the hair is very long.



STEP 3 Wear gloves. Pour 80 ml of **Smoothing Fluid** into the Mousse Maker. The recommended quantity is a suggestion: it may vary dependent on the length, density and porosity of the hair.



MIXABLE WITH PIGMENTS!



STEP 4 Divide the hair into sections approximately 2cm deep. Use the mousse maker to apply the fluid all over, keeping 1cm away from the root. Distribute evenly over lengths and ends using your hands. Make sure the hair is very wet.



STEP 5 Cover the hair with a cap and process under heat for twenty minutes.
After processing, remove the cap and leave the hair to cool at room temperature for 5 minutes.



STEP 6 Without rinsing the hair, apply **Rehydrating Finishing Mask**, and distribute through lengths and ends with a comb.

Leave for 5 minutes then rinse quickly to remove the excess product, for 15 seconds if the hair is short and for 30 seconds if the hair is long.



MIXABLE WITH PIGMENTS!



STEP 7 Use a hairdryer to rough dry your hair until it is 100% dry.

Iron the hair in 0.5cm sections using the guidelines indicated in the table.



Precision Method
use less quantity of Smoothing Fluid.

Express Method
save from 25% to 30% of time.

TYPE OF HAIR	TEMPERATURE OF FLAT IRON	NO. OF PASSES
Coarse, resistant or natural	200 °C - 210 °C	15 - 18
Normal	190 °C - 200 °C	12 - 15
Cosmetically-colored	170 °C - 180 °C	10 - 12
Fine, damaged, bleached natural grey, with over 75% highlights, red cosmetically colored.	160 °C - 170 °C	6 - 8

Easy Lisse Discipline Treatment

The luxury of saying goodbye to frizz for easy styling every day.



STEP 1 Apply **Deep Cleansing Shampoo** to damp hair. Massage to create an even lather, then rinse.

Shampoo twice.



THE TECHNICIAN'S TIP
If the hair is very curly/coarse, leave **Deep Cleansing Shampoo** for 5/10 minutes under heat. Then rinse thoroughly.

STEP 2 Towel-dry the hair.

Divide the hair into 6 sections, or into 8 sections if the hair is very long.



STEP 3 Wear gloves. Measure between 30 to 50 ml of **Easy Lisse Discipline Treatment** into a bowl, adjusting the quantity according to the length of the hair. Rinse thoroughly.

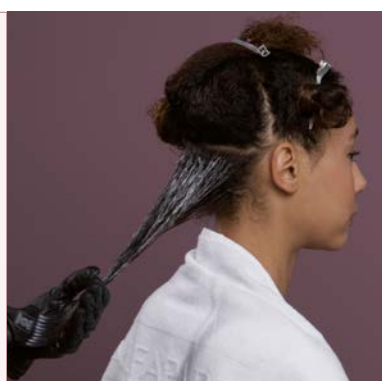


MIXABLE WITH PIGMENTS!



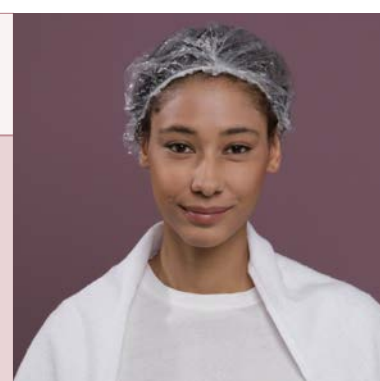
STEP 4 Apply the product through lengths and ends, section by section, keeping the product 1 cm away from the root.

Massage the product along the section and use a comb to ensure more even distribution.



STEP 5 Cover the hair with a plastic cap and leave at room temperature for twenty minutes. Rinse thoroughly.

THE TECHNICIAN'S TIP
If the hair is very curly and/or coarse cover it with a plastic cap and process for twenty minutes under heat. This intensifies the discipline effect and the longevity of the anti-frizz effect. After processing, remove the cap and leave the hair to cool, at room temperature, for 5 minutes. Rinse thoroughly.



STEP 6 Blow dry the hair and iron it using 2cm sections following the recommendations in the table.

THE TECHNICIAN'S TIP
If the hair is very curly, towel-dry the hair and apply **Detangling Cream**. This will facilitate blow-drying.



Easy Lisse Discipline Treatment ends with the iron use. If you want to go back to your natural hair texture, no problem!

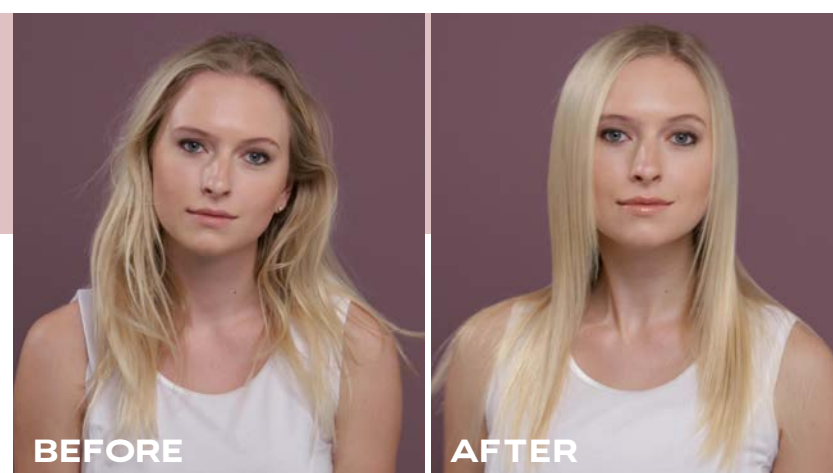
Rinse your hair again and dry as usual.



TYPE OF HAIR	TEMPERATURE OF FLAT IRON	NO. OF PASSES
Treated and/or fine	160 °C	4 - 6
Normal, coarse and/or very resistant	200 °C	6 - 8

Lamination Treatment

The luxury of perfect, shiny hair. Instantly, every day.



STEP 1 Apply **Deep Cleansing Shampoo** to damp hair. Massage to create an even lather, then rinse.

Shampoo twice.



STEP 2 Towel-dry the hair then use a hair dryer to dry the hair until it is 50% dry.

STEP 3 Wear gloves. Put equal parts of **Rehydrating Finishing Mask** and **Smoothing Fluid** in a bowl, choosing the quantity according to the length of the hair. Then add 1 drop of **The Oil** for every 10g of **Rehydrating Finishing Mask**.

For example: 30 ml of Rehydrating Finishing Mask + 30 ml of Smoothing Fluid + 3 drops of The Oil



MIXABLE WITH PIGMENTS!



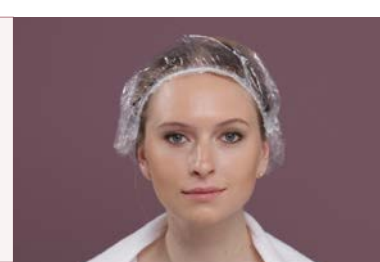
STEP 4 Take a section and apply the product through lengths and ends, staying 1.5cm away from the root.

Massage well along the section and use a comb to evenly distribute the product.



STEP 5 Cover the hair with a plastic cap and leave under heat for 10 minutes. Then remove the cap and leave the hair to cool at room temperature for 5 minutes.

Rinse thoroughly.



STEP 6 Apply **Keratin Serum** through lengths and ends and blow dry as usual.



STEP 7 Iron the hair in 2cm sections, according to recommendations in the table.



TYPE OF HAIR	TEMPERATURE OF FLAT IRON	NO. OF PASSES
Treated and/or fine	160 °C	3 - 4
Normal, coarse and/or very resistant	200 °C	3 - 4

COLOR SERVICES AND KERATIN THERAPY

SERVICES THAT CAN BE PERFORMED ON THE SAME DAY:

· RE-GROWTH COLOR SERVICE

Re-touch your roots with one of our permanent or demi-permanent colors. When rinsing the color, use Deep Cleansing Shampoo for the second shampoo, then perform the desired Keratin Therapy service.

· REFRESH LENGTHS AND ENDS

Refresh the color by:

- Using Pigments during the chosen Keratin Therapy service, as explained here:

- Lisse Design services can alter the appearance of a cosmetic color or natural white/grey hair. To minimise this alteration mix Smoothing Fluid / Easy Lisse Discipline Treatment with the most appropriate Pigments shade in a 10:1 mixing ratio. E.g.: 40 ml Smoothing Fluid: 4 ml Pigments
- For cool blonde or white/grey hair mix Smoothing Fluid / Easy Lisse Discipline Treatment with Violet Ash . 21 in an 8:1 ratio to prevent yellowing. E.g.: 40 ml Smoothing Fluid: 5 ml Pigments
- For warm blonde hair mix Smoothing Fluid / Easy Lisse Discipline Treatment with Violet Ash. 21 in a 20:1 ratio to prevent excess yellowing. E.g.: 40 ml Smoothing Fluid: 2 ml Pigments
- If you wish to further refresh or neutralize the color, mix Rehydrating Finishing Mask with the most appropriate Pigments shade, in a 10:1 ratio, and allow to process for 5/10 minutes.

- Using Color Wear cream immediately after the Keratin Therapy service.
After Lisse Design - Express Method, shampoo the hair before applying color.

SERVICES THAT ARE RECOMMENDED ON DIFFERENT DAYS:

· RADICAL COLOR CHANGE WITHOUT USING BLEACH

We recommend that you carry out the chosen Keratin Therapy service first and color the hair three or more days later, it is important to shampoo the hair at least once between the Keratin Therapy and color services.

· HIGHLIGHTING/ FULL-HEAD BLEACH

It is possible to perform the services in either sequence, but please note:

- If Highlighting/full-head bleaching first choose the temperature of the straightening irons for the Keratin Therapy service very carefully. If the temperature is too high, the color could lighten even more and/or create unwanted tones.
- If Highlighting/ full-head bleaching after the Keratin Therapy service be careful when choosing the peroxide strength for the bleach mixture. Use 5/10 volume (no stronger!) because lightening is faster after a Keratin Therapy service. Shampoo the hair at least once between the Keratin Therapy and color services.

ALFAPARF
MILANO
PROFESSIONAL

alfaparfmilanopro.com



Watch the video services here!