

ALFAPARF
MILANO
PROFESSIONAL

BLONDERA Pro System

Technical poster and step by step

The new era of blonde has arrived!

BLONDERA Pro System is the evolution of the professional line dedicated to blonde.

An integrated system for every phase of the service, created to be your ally in the salon, allowing you to work with precision and protection while leaving you free to express your creativity.

The new line includes:

- **A new generation of bleaches:** 4 powders and 1 cream
- **6 technical products** to elevate the quality of salon services
- **5 special toners** with modern shades



Enhanced protection before, during, and after the service.

BETABOND TECHNOLOGY

A transversal hair protection technology across all **BLONDERA Pro System** products.

It preserves the bonds of the hair fiber, protecting its integrity during technical services.

It contains **betaine**, a molecule with a high affinity to keratin, which acts deeply on the internal structure, helping to **strengthen the hair and reduce breakage damage**.

Our new technology helps **safeguard the cosmetic quality of the hair**, even during intensive treatments.



*Formulas are free from ingredients of animal origin or derivation.



Bleaches

*Formulas are free from ingredients of animal origin or derivation.



Easy Lift 7 Levels

Size: 400 g
(14.1 Oz. Net Wt.) pouch
12x50 g
(1.76 Oz. Net Wt.) sachet

Blue bleach powder. Ideal for moderate to maximum lightening services on natural and/or cosmetically treated hair.

PLUS

Can also be used for on-scalp application.
Dust Free.



Free Style Lift 7 levels

Size: 400 g
(14.1 Oz. Net Wt.) pouch

White bleach powder. Ideal for freehand techniques.

PLUS

Its texture with **white clay** ensures easy and precise application. **Rice starch** maintains optimal internal moisture during application.
Dust Free.



High Lift 9 levels

Size: 400 g
(14.1 Oz. Net Wt.) pouch
12x50 g
(1.76 Oz. Net Wt.) sachet

White bleach powder. Ideal for maximum lightening on cosmetically colored hair.

PLUS

Faster lightening action.
Saves up to 10 minutes during the technical service.*
Dust Free.

*Compared to BB Bleach High Lift 9 levels by Alfaparf Milano Professional.



Violet High Lift 9 levels

Size: 400 g
(14.1 Oz. Net Wt.) pouch

Bleach powder with violet pigment. Ideal for maximum lightening on natural hair.

PLUS

The violet pigment effectively neutralizes unwanted yellow tones during the lightening process.
Dust Free.



Easy Lift Cream 7 levels

Size: 250 g
(8.8 Oz. Net Wt.) tube

White cream bleach. Ideal for on-scalp bleach services.

PLUS

The creamy texture is specifically formulated for **precision work at the roots.**

BETABOND TECHNOLOGY

PASSIFLORA OIL

All bleaches are enriched with Passiflora Oil, it helps control frizz and facilitates detangling, as well as having a protective action that preserves the color's luminosity.

PERFORMANCE

Up to **-42% hair breakage***

*Compared to a basic bleach formula.

Hair is up to **39% easier to comb***

*Test performed on dry hair compared to hair treated with BB Bleach line formulas.

Method of use

STEP 1

Mix the selected bleach with Oxid'O in a non-metallic bowl. Refer to the table for the choice of peroxide strength and mixing ratio, according to the selected product and lightening technique. Follow the recommended mixing ratio carefully. For damaged or very dry hair, add 10 g of Bond Rebuilder for every 30 g of bleach used. Mix with a brush to obtain an homogeneous cream.

STEP 2

In case of scalp discomfort or on-scalp bleaching, apply 1 vial of Scalp Protector directly to the scalp 5 minutes before beginning any technical service, or alternatively mix 1 vial with 60 g of bleach + activator. Apply Anti-Metal Primer to dry hair for an anti-metal action and to rebalance fiber porosity. Blow-dry, or alternatively allow to air-dry for 3–5 minutes, then continue with the technical service. Apply the bleach mixture to dry unwashed hair. Check the lightening level regularly. Do not use under a heat source.

STEP 3

Once the desired lightening level has been reached, rinse thoroughly and apply pH Balance Shampoo 1 to completely remove any residues of the bleach mixture. Complete the service by applying pH Stabilizer Conditioner 2.

	EASY LIFT CREAM	EASY LIFT	FREE STYLE LIFT	HIGH LIFT	VIOLET HIGH LIFT
TYPE OF PRODUCT	7-level bleaching cream	7-level bleaching powder	7-level bleaching powder with clay	9-level bleaching powder	9-level bleaching powder with neutralizing pigment
IDEAL FOR	On-scalp bleach applications	Moderate to maximum lightening on natural and/or cosmetically treated hair	Freehand bleaching	Maximum lightening on dark cosmetically colored hair	Maximum lightening on dark natural hair
BLEACHING TECHNIQUES	Precision work at the roots	All	Freehand applications	All except on-scalp applications	All except on-scalp applications
MIXING RATIO	1:1.5	From 1:1.5 to 1:2	1:1	From 1:1.5 to 1:2	1:2
RECOMMENDED PEROXIDE STRENGTH	5, 10, 20	5, 10, 20, 30, 40	5, 10, 20, 30, 40	20, 30	20, 30
PROCESSING TIME*	Up to 50'				
LEVELS OF LIGHTENING	Up to 7			Up to 9	

*Bleaching mixture could go on lightening even after 50 minutes.

Bleach shampoo

Mix 25 g of Easy Lift bleach powder with 75 g of 5 vol. Oxid'O and 10 g of shampoo. Leave on for 5 to 25 minutes, until the desired result is achieved (levels of lift: up to 2).



Technical Products

*Formulas are free from ingredients of animal origin or derivation.





Scalp Protector

Size: 12 vials single use of 13 ml (0.44 Fl.Oz.) each



Anti-Metal Primer

Size: 350 ml (11.83 Fl. Oz.) bottle



Bond Rebuilder

Size: 300 ml (10.14 Fl.Oz.) tube



pH Balance Shampoo 1

Size: 1 L (33.8 Fl. Oz.) bottle



pH Stabilizer Conditioner 2

Size: 1 L (33.8 Fl. Oz.) bottle



Stain Remover

Size: 125 ml (4.23 Fl. Oz.) bottle

Scalp protective serum.
Fragrance Free.

Multi-benefit primer with anti-metal and porosity-balancing actions.
Alcohol Free.

Fiber repair cream that preserves the hair fiber during technical services: reduces possible damage and breakage, helps rebuild bonds, and improves strength. With a high concentration of BETABOND TECHNOLOGY for extraordinary protection.

Shampoo to finish technical services that gently cleanses, restoring the pH balance of the hair and scalp that have been changed by technical services.
Sulfate Free.

Conditioner to finish technical services that conditions and nourishes the hair, stabilizes the pH balance over time, and restores the state of the fiber. Nourishes, seals the cuticles, and enhances shine.

Cleansing fluid that effectively removes color stains from the hairline.

CALM RESTORER
An active ingredient that helps to bring relief and reduce sensations of discomfort and tingling, for enhanced scalp comfort.

METAL RESET
An active ingredient that helps to neutralize heavy metals and removes pollution particle deposit from the hair, without affecting the color result (both color and lightening), leaving hair radiant.

PASSIFLORA OIL
It helps control frizz and facilitates detangling, as well as having a protective action that preserves the color's luminosity.

PEPPERMINT ESSENTIAL OIL
For a refreshing, lightweight sensation.

PASSIFLORA OIL
It helps control frizz and facilitates detangling, as well as having a protective action that preserves the color's luminosity.

ANTIOXI SHIELD
An active ingredient that has an antioxidant action on the hair, protecting it during technical processes, and shields it from external aggressors.

CALM RESTORER
An active ingredient that helps to bring relief and reduce sensations of discomfort and tingling, for enhanced scalp comfort.

BETABOND TECHNOLOGY

PERFORMANCE

Soothing action*
*Clinical test conducted on 20 subjects with sensitive scalps, compared to the same technical service performed without the use of Scalp Protector.

Up to -91% hair breakage*
*Using Anti-Metal Primer, pH Balance Shampoo 1, and pH Stabilizer Conditioner 2, compared to the same service performed with a basic shampoo.

Loss of strength reduced by up to 92%*
*Compared to a bleach service without the use of Bond Rebuilder.

Combability up to +74% on dry hair*
*Using pH Balance Shampoo 1 and pH Stabilizer Conditioner 2 compared to the use of a basic shampoo, after a bleach service.

● ○ ○
PRE | DURING | POST SERVICE
Each product clearly indicates the phase of the service in which it should be used!

Method of use

Scalp Protector

Anti-Metal Primer

Bond Rebuilder

DESCRIPTION	WHEN TO USE	METHOD OF USE
Scalp protective serum.	On customers who experience scalp discomfort during technical services. Always when bleaching on-scalp.	On the scalp: apply the vial directly to the scalp 5 minutes before beginning any technical service (color, bleach or shape). In the mixture: mix 1 vial with 60 g of color /bleach + activator, then proceed with the usual application.
Multi-benefit primer with anti-metal and porosity balancing actions.	Before a color, bleaching, or shaping service.	Apply to dry hair prior to any technical service (color, bleach, or shape). Spray 10 to 20 pumps depending on the length and density of the hair. Use a comb to distribute the product evenly from roots to ends, section by section. Blow-dry, or alternatively allow to air-dry for 3–5 minutes, then continue with the technical service.
Fiber repair cream. Preserves the hair fiber during technical services: reduces possible damage and breakage, helps rebuild bonds, and improves hair strength.	In bleach services: when bleached hair are naturally delicate or to add extreme lightness. In color/shape services: when hair is damaged or very dry.	For color/bleach services: mix the color cream/bleach product with the corresponding amount of activator. Add 10 g of Bond Rebuilder for every 30 g of color cream/bleach product used and mix until smooth. For color services, only use Bond Rebuilder in the mixture for the lengths and ends. Apply as usual. For shape services: mix 10 g of Bond Rebuilder for every 60 ml of Lisse Design Smoothing Cream/Smoothing Fluid/Curl Design Move Designer used. Apply as usual. Alone: for a restructuring service apply Bond Rebuilder on washed and towel dried hair, process under a heat source for 10 minutes. Rinse thoroughly.

pH Balance Shampoo 1

pH Stabilizer Conditioner 2

Stain Remover

DESCRIPTION	WHEN TO USE	METHOD OF USE
Shampoo to finish technical services. Gently cleanses, restoring the pH balance of the hair and scalp that have been changed by technical services.	After a color or bleaching service.	Apply to wet hair and emulsify to create a rich lather over the entire head. Rinse thoroughly. Repeat if necessary. Can be mixed with Pigments.
Conditioner to finish technical services. Conditions and nourishes the hair, stabilizes the pH balance over time, and restores the state of the fiber. Nourishes, seals the cuticles, and enhances shine.	After a color or bleaching service.	Apply to lengths and ends after cleansing with pH Balance Shampoo 1. Use a comb to distribute the product and leave on for 1 to 3 minutes. Rinse thoroughly. Can be mixed with Pigments.
Cleansing fluid that effectively removes color stains from the hairline.	After a color service, to remove any color stains from the hairline.	Apply a small amount of Stain Remover to dry cotton wool, and then gently rub the stained area. Rinse.

Harmonizers

*Formulas are free from ingredients of animal origin or derivation.



Size: 60 ml
(Net Wt. 2.06 Oz.-58.5 g/r)
tube

MIX 1:2

Up to 1.5 levels of lightening to even out non-uniform results.

TEXTURE

Creamy.

METHOD OF USE

Apply to dry hair. On partial lightening results, where there is a mixture of highlights and natural hair, Harmonizers may lighten the natural base.



.01



.013



.02



.03



.08

LIPOSHINE COMPLEX

A complex composed of castor oil-derived esters and a lightweight emollient ester, a natural-origin alternative to silicones.

Castor oil esters enhance shine, while the emollient ester improves combability.

The result: soft, silky, smooth and shiny hair.

TECHNOLOGICAL MENTHOL DERIVATIVE

For a pleasant refreshing sensation.

Tone without depth:

To ensure brightness without adding depth to the lightening result.

With the correct intensity of tone:

To neutralize unwanted tones, without over-toning.



COLOR GUARD TECHNOLOGY PATENTED IN THE US AND ITALY

For longer-lasting color.

WITH HYALURONIC ACID

It forms a lattice-like net around the hair, to help achieve an optimal distribution of the color and creates maximum adherence.



EVOLUTION
OF THE COLOR

Method of use

HARMONIZERS	OXID'O	MIX	TIME
60g	120ml 5/10/20 vol.	1:2	10/20'

Mixing ratio 1:2 with:

- 5 volume Oxid'O to tone with minimal lightening.
- 10/20 volume Oxid'O to tone and create a more even result by gently lightening the hair.

CHROMATIC BLENDS WITH EVOLUTION OF THE COLOR

By mixing the 5 Harmonizers with Evolution of the color shades, you can create an infinite palette of new shades:

¾ Harmonizers + ¼ Evolution of the color shade - this is the maximum quantity of Evolution of the color shades.

For example: 45 g Harmonizers + 15 g Evolution of the color shade + 120 ml Oxid'O.

PERFORMANCE

2x shinier hair*

*Test on hair colored with Harmonizers (shade .01) compared to untreated hair.

Up to +69% color retention after 12 washes*

*Test on hair colored with Harmonizers (shade .01).

Combability up to +75% on wet hair*

*Test on hair colored with Harmonizers (shade .01) compared to untreated hair.

BETABOND TECHNOLOGY

Step by step

Discover the 5 techniques dedicated to blonde, created by Alfaparf Milano Professional's Blonde Creators to fully enhance the potential of BLONDERA Pro System.

Versatile looks using the products from the new line, designed to be recreated in your salon to elevate and expand your service menu.



#OnceABlondeAlwaysABlonde

GOLDEN GLEAM

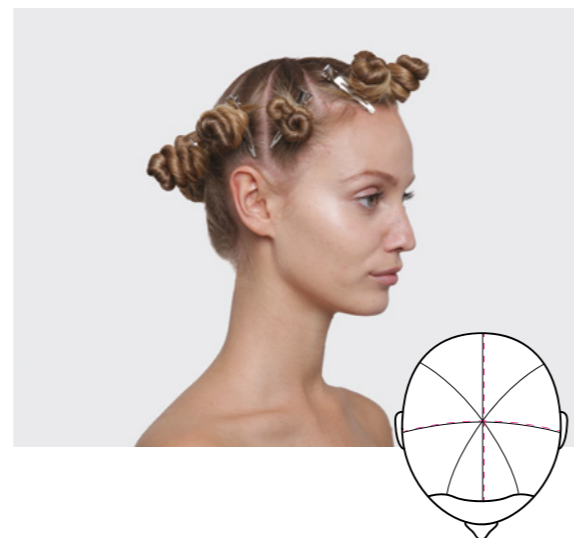
Must-have for this look:

BLONDERA Pro System Easy Lift
Color Wear Gloss Toner 010N, 010.32,
Clear or
Color Wear Cream 10.31



1. SECTIONS

- Apply **Anti-Metal Primer** to dry hair, distributing evenly from roots to ends.
- Dry with a hair dryer or, alternatively, leave to air-dry for 3-5 minutes.
- Section the hair into → *four quadrants*.
- Further subdivide the hair into eight evenly distributed sections to create a radial pattern.



BLEACH FORMULA

Product	BLONDERA Pro System Easy Lift
Oxidant	Oxid'O 20 vol.
Mixing ratio	1:2

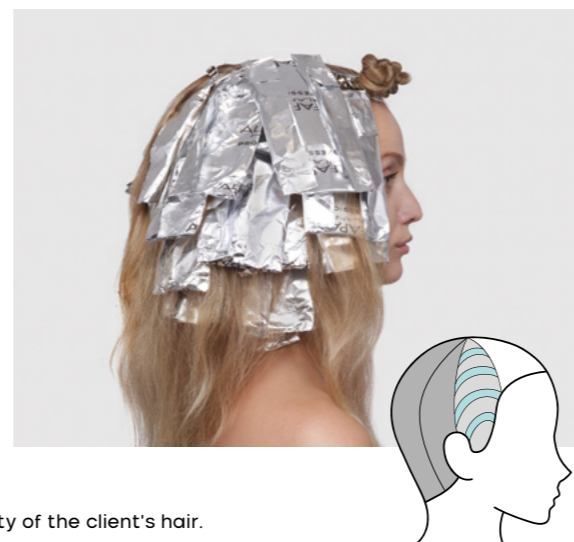
2. BACK AREA

- Starting with one of the two central sections, take → *concave subsections* that are approximately 2-3* cm deep.
- Use an → *Airtouch* technique to lighten all the subsections, creating a soft → *blend* at the roots.
- Repeat the process in the second central section.
- Repeat the sequence on the remaining two back-side sections.



3. SIDE AREA

- Replicate the method used in the back area.
- Lighten all subsections using an Airtouch technique, creating a soft blend at the roots.
- Repeat on the opposite side.



*The measurement is a guide. The size of the subsection depends on the density of the client's hair.
Note: terms preceded by → are explained in the Glossary (pp. 38-39).

4. FRONT AREA

- Create a → *Face Frame* with the bleach mixture using an Airtouch technique, creating a soft blend.
- Continue towards the crown, applying the bleach mixture as in the previous sections.



5. PROCESSING TIME

- Process the bleach mixture until a pale yellow melanin residue is achieved, for a maximum of 50 minutes.
- Wash with **pH Balance Shampoo 1** and apply **pH Stabilizer Conditioner 2**.
- Rinse and dry the hair.



TONER FORMULA

	COLOR WEAR GLOSS TONER	COLOR WEAR CREAM
Products	¼ 010N + ¼ 010.32 + ½ 0 (Clear)	10.31
Oxidant	Stabilized Peroxide Liquid 9.5 vol.	Oxid'O 5 vol.
Mixing ratio	1:2	1:3

6. TONING

- Tone using one of the two suggested mixtures, leaving it on until the desired color is achieved, for a maximum of 20 minutes.
- Rinse and apply the most suitable care treatment.
- Style as desired.



Note: terms preceded by → are explained in the Glossary (pp. 38-39).

#OnMyWayToBelconic

MIDNIGHT VEIL

Must-have for this look:

BLONDERA Pro System High Lift

BLONDERA Pro System Harmonizers .01

Evolution of the color 410



1. SECTIONS

- Apply **Anti-Metal Primer** to dry hair, distributing evenly from roots to ends.
- Dry with a hair dryer or, alternatively, leave to air-dry for 3-5 minutes.
- Section the hair into → *four quadrants*.
- Divide the hair into four sections: one at the back, two on the sides and one on top.



BLEACH FORMULA

Product	BLONDERA Pro System High Lift
Oxidant	Oxid'O 30 vol.
Mixing ratio	1:2

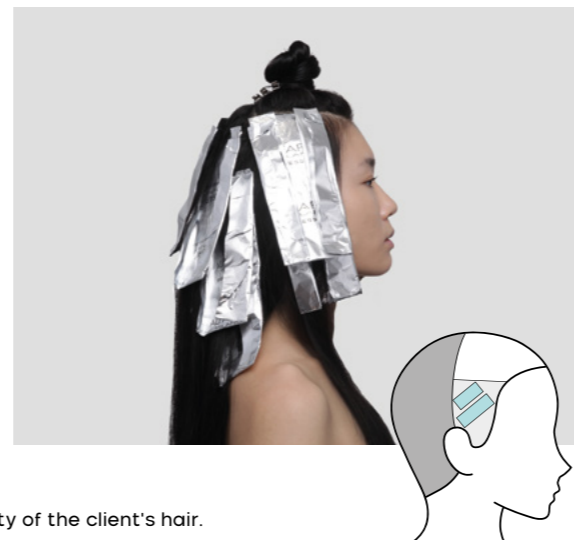
2. BACK AREA

- Take a horizontal subsection about 5–10* cm wide and apply the bleach using an → *Airtouch* technique, creating a soft → *blend* at the roots during application.
- Next, take diagonal subsections at the back, one on the right side and one on the left side, lightening with an Airtouch technique and creating a soft blend at the roots.
- Repeat the sequence working your way up towards the top.



3. SIDE AREA

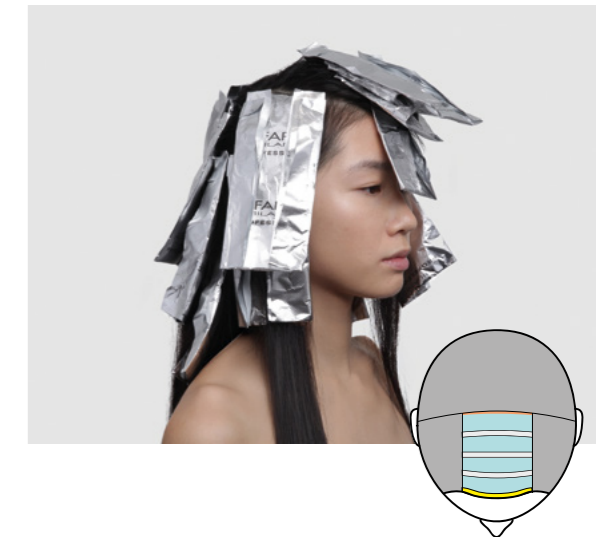
- Create one or two diagonal subsections that are approximately 5–10* cm wide.
- Holding the sections towards the face, lighten using an Airtouch technique, creating a root blend during application.
- Repeat on the opposite side.



*The measurement is a guide. The size of the subsection depends on the density of the client's hair.
Note: terms preceded by → are explained in the Glossary (pp. 38–39).

4. FRONT AREA

- Create a → *Face Frame* using an Airtouch technique, applying the bleach to create a soft blend.
- Continue towards the crown, taking 2 or 3 horizontal subsections and lightening with an Airtouch technique, creating a soft blend at the roots.
- Near the crown, leave a fine subsection of hair unlightened.



5. PROCESSING TIME

- Process the bleach to achieve a pale yellow melanin residue, for a maximum of 50 minutes.
- Wash with **pH Balance Shampoo 1** and apply **pH Stabilizer Conditioner 2**.
- Rinse and dry the hair.



TONER FORMULA

Products	BLONDERA Pro System Harmonizers .01 + Evolution of the color 410 – 13:1 (39g+3g)
Oxidant	Oxid'O 5 vol.
Mixing ratio	1:2

6. TONING

- Allow the toner to process until the desired color is achieved, for a maximum of 20 minutes.
- Rinse and apply the most suitable care treatment.
- Style as desired.



Note: terms preceded by → are explained in the Glossary (pp. 38–39).

#SoftIsTheNewBold

SAND GLIMMER

Must-have for this look:

BLONDERA Pro System Violet High Lift



1. SECTIONS

- Apply **Anti-Metal Primer** to dry hair, distributing evenly from roots to ends.
- Dry with a hair dryer or, alternatively, leave to air-dry for 3-5 minutes.
- Section the hair into → *four quadrants*.
- Divide the hair into five sections: two at the back, two at the sides and one on top.



BLEACH FORMULA

Product	BLONDERA Pro System Violet High Lift
Oxidant	Oxid'O 30 vol.
Mixing ratio	1:2

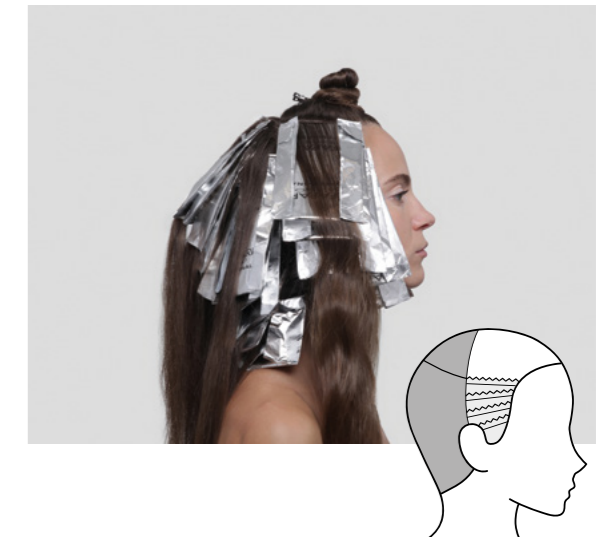
2. BACK AREA

- Take 2 diagonal subsections on the right side, alternating → *slices* and → *weaves* lightening with an → *Airtouch* technique and creating a soft → *blend* at the root during application.
- Repeat with 2 diagonal subsections on the left side.
- Then create 2 horizontal subsections in the center, again alternating slices and weaves, creating a soft blend at the roots.
- Repeat the entire sequence, working your way up to the top.
- In the upper triangular section, take horizontal subsections, alternating slices and weaves, and lighten creating a soft blend.



3. SIDE AREA

- Start with diagonal subsections, alternating slices and weaves, and lighten with an *Airtouch* technique, creating a soft blend at the root during application.
- Gradually pivot the subsections until they become horizontal, always alternating slices and weaves and creating a soft blend at the root.
- Repeat on the opposite side.



4. FRONT AREA

- Create a → *Face Frame* using an *Airtouch* technique, applying the bleach to create a soft blend.
- Continue towards the crown, taking subsections about 1* cm deep, alternating slices and weaves, lightening and creating a soft blend at the root.
- Near the crown, leave a fine section unlightened.



5. PROCESSING TIME

- Process the bleach until the desired level of lightening is reached, for a maximum of 50 minutes.
- Wash with **pH Balance Shampoo 1** and apply **pH Stabilizer Conditioner 2**.
- Rinse and style as desired.



TONER?

No need! The violet pigment effectively neutralizes unwanted yellow tones during the lightening process.

Note: terms preceded by → are explained in the Glossary (pp. 38-39).

*The measurement is a guide. The size of the subsection depends on the density of the client's hair.
Note: terms preceded by → are explained in the Glossary (pp. 38-39).

#CurlsJustGlowDifferent

SUNLIT AMBER

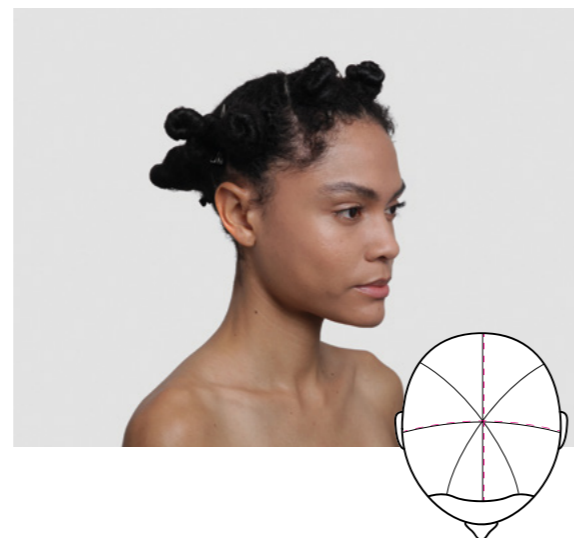
Must-have for this look:

BLONDERA Pro System Free Style Lift
Color Wear Gloss Toner 08.23 or
Color Wear Cream 8.03, 9.2



1. SECTIONS

- Apply **Anti-Metal Primer** to dry hair, distributing evenly from roots to ends.
- Dry with a hair dryer or, alternatively, leave to air-dry for 3-5 minutes.
- Section the hair into → *four quadrants*.
- Further subdivide the hair into eight evenly distributed sections to create a radial pattern.



BLEACH FORMULA

Product	BLONDERA Pro System Free Style Lift
Oxidant	Oxid'O 30 vol.
Mixing ratio	1:1

TIP: For a more diffused and mesmerizing result, apply the product to both the upper and lower parts of the subsection.

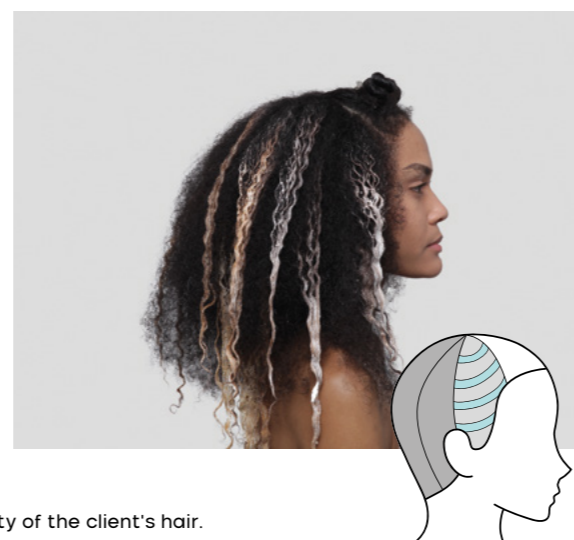
2. BACK AREA

- Starting in one of the two central sections, create concave subsections about 3-4* cm deep.
- In each subsection, create → *convex subsections* with your fingers and use a freehand lightening technique, creating a soft → *blend* at the root during application.
- Repeat this method in the second central section.
- Repeat in the remaining two sections.



3. SIDE AREA

- Use the same method of application, using smaller concave subsections about 2-3* cm deep.
- For each subsection, create convex sections and use a freehand lightening technique, creating a soft blend at the root during application.
- Repeat on the opposite side.



*The measurement is a guide. The size of the subsection depends on the density of the client's hair.
Note: terms preceded by → are explained in the Glossary (pp. 38-39).

4. FRONT AREA

- Continue towards the crown, taking convex subsections about 2* cm deep and lightening with a freehand technique, creating a soft blend to add depth at the root area.



5. PROCESSING TIME

- Process the bleach to achieve a gold melanin residue, for a maximum of 50 minutes.
- Wash with **pH Balance Shampoo 1** and apply **pH Stabilizer Conditioner 2**.
- Rinse and dry the hair.



TONER FORMULA

	COLOR WEAR GLOSS TONER	COLOR WEAR CREAM
Products	08.23	½ 8.03 + ½ 9.2
Oxidant	Stabilized Peroxide Liquid 9.5 vol.	Oxid'O 5 vol.
Mixing ratio	1:2	1:3

6. TONING

- Tone using one of the suggested mixtures, leaving it to process until the desired color is achieved, for a maximum of 20 minutes.
- Rinse and apply the most suitable care treatment.
- Style as desired.



*The measurement is a guide. The size of the subsection depends on the density of the client's hair.

#AsCoolAsIce

IRIDESCENT LIGHT

Must-have for this look:

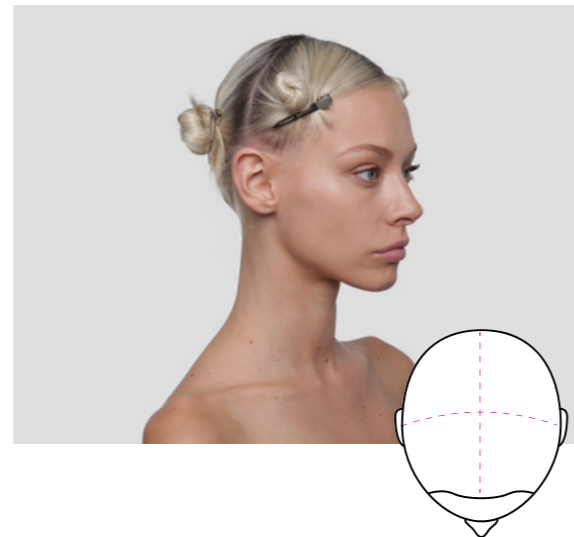
BLONDERA Pro System Easy Lift Cream

BLONDERA Pro System Harmonizers .08



1. SECTIONS

- Apply one vial of **Scalp Protector** to the scalp.
- Apply **Anti-Metal Primer** to dry hair, distributing evenly from roots to ends.
- Dry with a hair dryer or, alternatively, leave to air-dry for 3-5 minutes.
- Section the hair into → *four quadrants*.



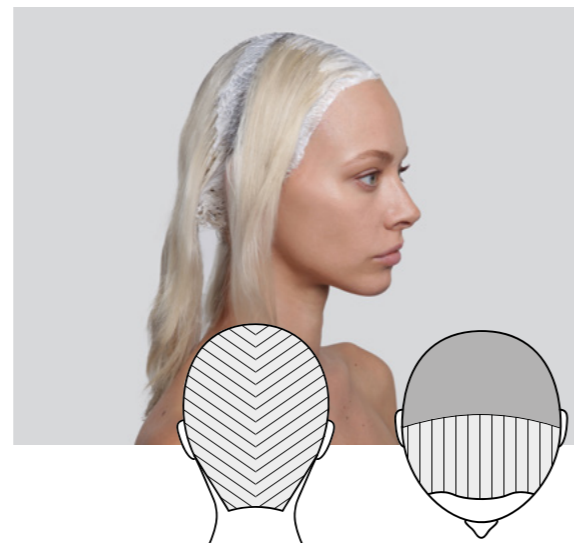
BLEACH FORMULA - ROOTS

Product	BLONDERA Pro System Easy Lift Cream
Oxidant	Oxid'O 20 vol.
Mixing ratio	1:1,5

2. ROOT APPLICATION

- Start at the back, take slightly diagonal subsections, alternating sides (right/left) section by section.
- Apply the product only to the regrowth area.
- Finish with the two front sections taking vertical subsections (parallel to the parting line).

Once the root has lightened to a yellow melanin residue, move on to the next step.



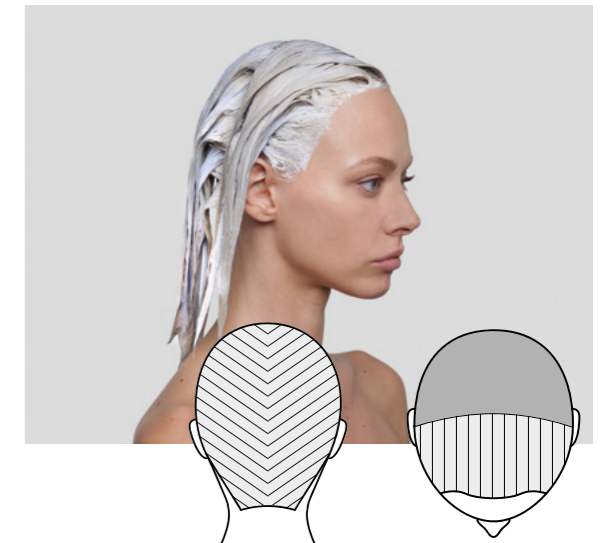
BLEACH FORMULA - LENGTHS AND ENDS

Product	BLONDERA Pro System Easy Lift
Oxidant	Oxid'O 20 vol.
Mixing ratio	1:2

Note: terms preceded by → are explained in the Glossary (pp. 38-39).

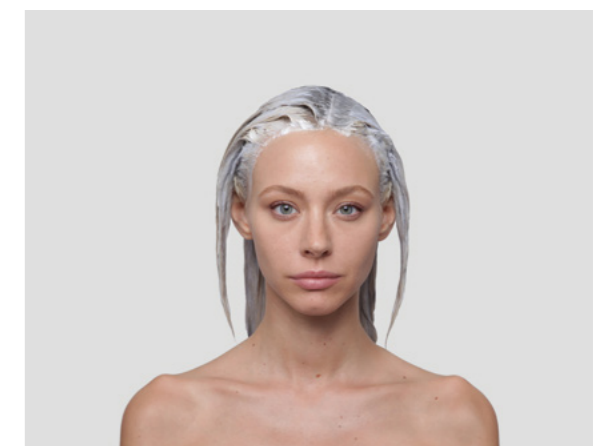
3. APPLICATION ON LENGTHS AND ENDS

- Start at the back, take slightly diagonal subsections, alternating sides (right/left) section by section.
- Apply the bleach mixture to the lengths and ends, avoiding overlapping on the root area.
- Finish with the two front sections taking vertical subsections (parallel to the parting line).



4. PROCESSING TIME

- Process the bleach mixture until a pale yellow melanin residue is reached, for a maximum of 50 minutes.
- Wash with **pH Balance Shampoo 1** and apply **pH Stabilizer Conditioner 2**.
- Rinse and dry the hair.



TONER FORMULA

Product	BLONDERA Pro System Harmonizers .08
Oxidant	Oxid'O 20 vol.
Mixing ratio	1:2

5. TONING

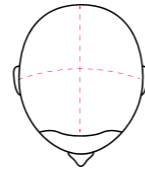
- Process the toner until the desired color is achieved, for a maximum of 20 minutes.
- Rinse and apply the most suitable care treatment.
- Style as desired.



Glossary

FOUR QUADRANTS

Sectioning the hair into four quadrants, center front to center nape and ear to ear, helps to divide the hair equally and manage the balance of the sections.



SLICE

A fine and uniform subsection of hair. It creates a more solid lightening effect.



WEAVE

A woven subsection, traditionally used in highlighting. It creates softer and more blended lightening, with a more natural-looking result.



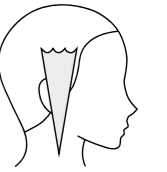
CONCAVE SUBSECTION

A subsection with an inwardly curved profile. It allows the work to be concentrated on specific points of the head, offering greater control in the distribution of color.



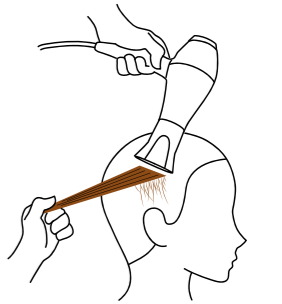
CONVEX SUBSECTION

A subsection with an outwardly curved profile. It follows the natural roundness of the head and creates a softer, more harmonious distribution of color.



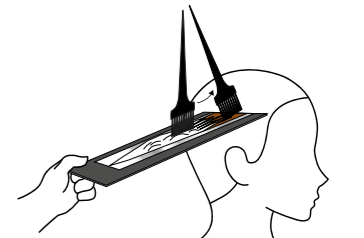
AIRTOUCH

A lightening technique that uses the air flow from the hair dryer to naturally separate shorter, finer hair from longer, thicker hair. This method creates a seamless transition between a softly highlighted root area and more saturated lengths and ends.



BLEND

An application technique that ensures harmony between the lightened and untreated parts of the hair, avoiding sharp lines or visible demarcation lines. The bleach mixture is applied with a sweeping motion to build the saturation of the product. The sweeping motion can be performed in an upwards or downwards direction to tailor the result.



FACE FRAME

A lightening technique that concentrates brightness around the front hairline. This method uses foils, contoured to reflect the natural hairlines, to frame the face.





**Glow blonde.
This is your era.**

ALFAPARF
MILANO
PROFESSIONAL

alfaparfmilanopro.com

PP033981



8 10222971206585

Made in Italy - BEAUTY & BUSINESS SPA - via C. Cortù 1 - 20123 Milano (Italy) ALFAPARF MILANO.